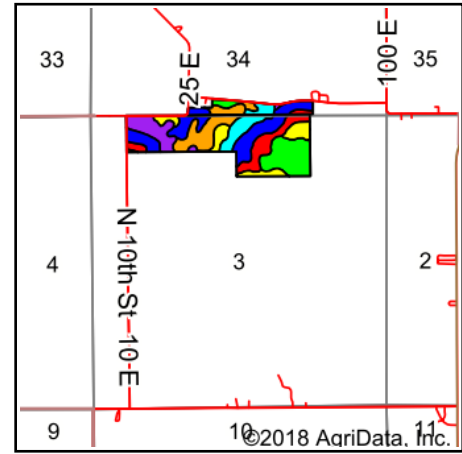
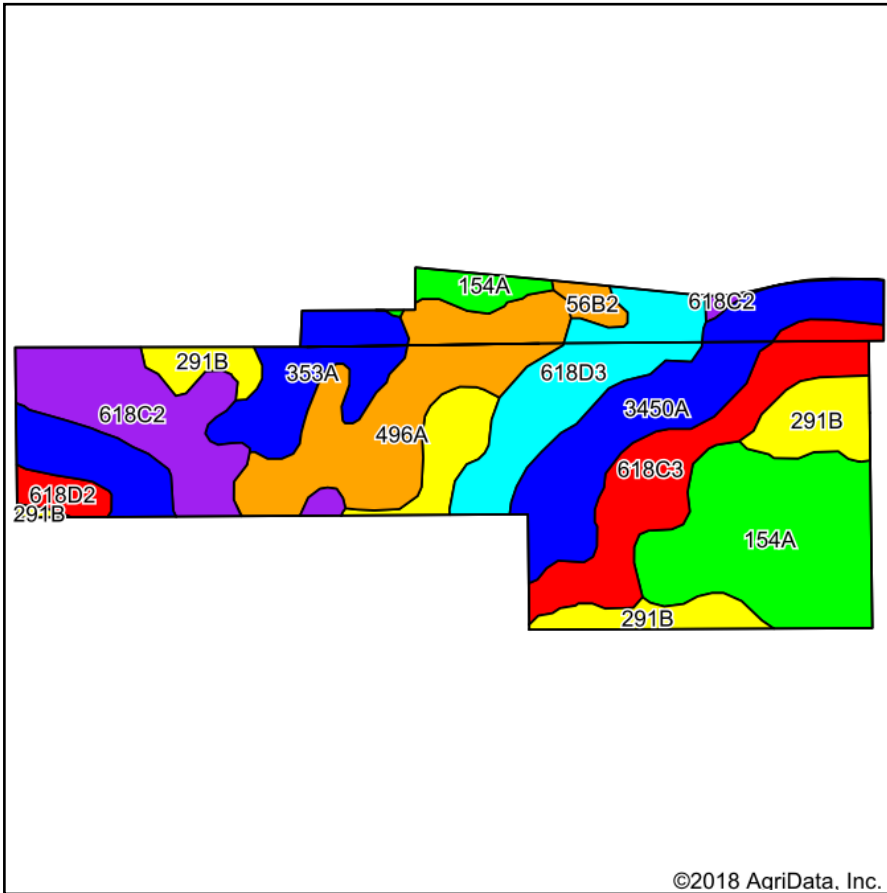


Block - Edgar - Kansas and Embarrass Soils Map



State: **Illinois**
 County: **Edgar**
 Location: **3-13N-14W**
 Township: **Kansas**
 Acres: **75.36**
 Date: **8/20/2018**



Soils data provided by USDA and NRCS.

©2018 AgriData, Inc.

Area Symbol: IL045, Soil Area Version: 12

Code	Soil Description	Acres	Percent of field	Il. State Productivity Index Legend	Subsoil rooting a	Corn Bu/A	Soybeans Bu/A	Wheat Bu/A	Oats Bu/A	Sorghum c Bu/A	Alfalfa d hay, T/A	Grass-le gume e hay, T/A	Crop productivity index for optimum management
154A	Flanagan silt loam, 0 to 2 percent slopes	13.07	17.3%		FAV	194	63	77	102	0	0.00	5.90	144
3450A	Brouillett silt loam, 0 to 2 percent slopes, frequently flooded	12.80	17.0%		FAV	180	58	70	90	0	0.00	5.52	133
496A	Fincastle silt loam, Bloomington Ridged Plain, 0 to 2 percent slopes	10.52	14.0%		FAV	166	52	65	85	0	0.00	5.02	121
**291B	Xenia silt loam, Bloomington Ridged Plain, 2 to 5 percent slopes	8.84	11.7%		FAV	**160	**50	**63	**82	0	**4.47	0.00	**117
**618C3	Senachwine clay loam, 5 to 10 percent slopes, severely eroded	8.21	10.9%		FAV	**126	**40	**50	**60	0	**3.02	0.00	**92
**618C2	Senachwine silt loam, 5 to 10 percent slopes, eroded	7.74	10.3%		FAV	**136	**44	**54	**65	0	**3.26	0.00	**100
**618D3	Senachwine clay loam, 10 to 18 percent slopes, severely eroded	7.11	9.4%		FAV	**118	**38	**47	**57	0	**2.84	0.00	**87
353A	Toronto silt loam, Bloomington Ridged Plain, 0 to 2 percent slopes	5.14	6.8%		FAV	174	56	69	93	0	0.00	5.27	128
**618D2	Senachwine silt loam, 10 to 18 percent slopes, eroded	1.17	1.6%		FAV	**130	**42	**52	**62	0	**3.12	0.00	**95
**56B2	Dana silt loam, 2 to 5 percent slopes, eroded	0.76	1.0%		FAV	**171	**53	**66	**94	0	**5.96	0.00	**124
Weighted Average						160.6	51.4	63.3	81.3	*	1.56	3.02	118.1

Table: Optimum Crop Productivity Ratings for Illinois Soil by K.R. Olson and J.M. Lang, Office of Research, ACES, University of Illinois at Champaign-Urbana. Version: 1/2/2012 Amended Table S2 B811

Crop yields and productivity indices for optimum management (B811) are maintained at the following NRES web site: <http://soilproductivity.nres.illinois.edu/>

** Indexes adjusted for slope and erosion according to Bulletin 811 Table S3

a UNF = unfavorable; FAV = favorable

b Soils in the southern region were not rated for oats and are shown with a zero "0".

c Soils in the northern region or in both regions were not rated for grain sorghum and are shown with a zero "0".

d Soils in the poorly drained group were not rated for alfalfa and are shown with a zero "0".

e Soils in the well drained group were not rated for grass-legume and are shown with a zero "0".

*c: Using Capabilities Class Dominant Condition Aggregation Method

Soils data provided by USDA and NRCS. Soils data provided by University of Illinois at Champaign-Urbana.