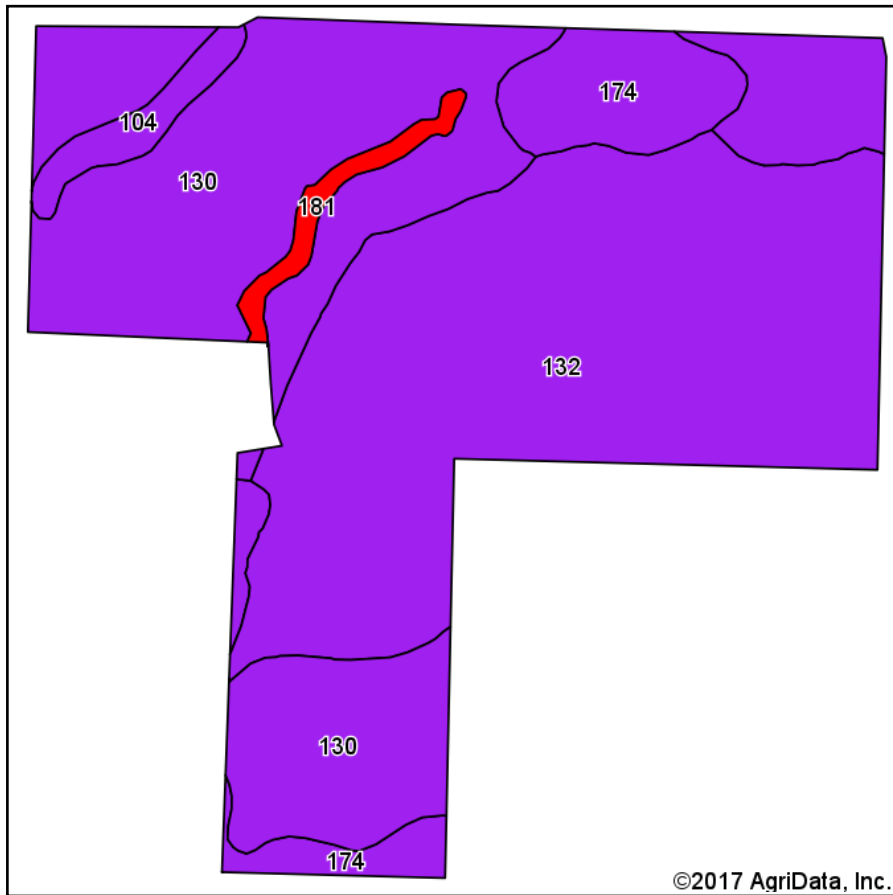
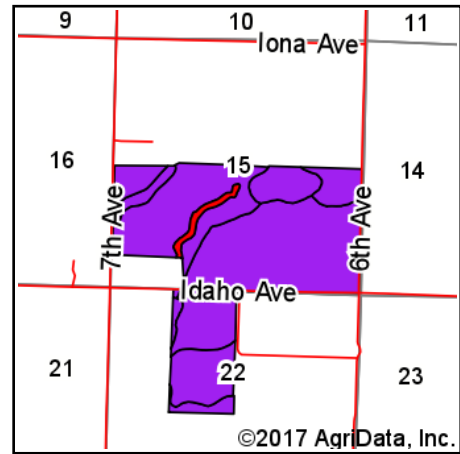


# Blue Heron Soils Map



Soils data provided by USDA and NRCS.



State: **California**  
 County: **Kings**  
 Location: **15-19S-22E**  
 Township: **Hanford**  
 Acres: **380.09**  
 Date: **6/26/2017**



Maps Provided By:



© AgriData, Inc. 2017

www.AgriDataInc.com



## Area Symbol: CA031, Soil Area Version: 12

Code	Soil Description	Acres	Percent of field	Non-Irr Class Legend	Non-Irr Class *c	Irr Class *c	Alfalfa hay Irrigated	Almonds Irrigated	Barley Irrigated	Cotton lint Irrigated	Irish potatoes Irrigated	Sugar beets Irrigated	Table grapes Irrigated	Wine grapes Irrigated
132	Kimberlina saline alkali-Garces complex	179.02	47.1%		Vlls	lls	7		70	1000		25		
130	Kimberlina fine sandy loam, saline-alkali	154.42	40.6%		Vlls	lls	7		70	1000		25		
174	Wasco sandy loam, 0 to 5 percent slopes	31.96	8.4%		Vlle	lle	8	2000		1125	340	25	350	6
104	Cajon sandy loam	8.40	2.2%		Vlls	llls	6		60	900				
181	Water	6.29	1.7%		VIII									
<b>Weighted Average</b>							<b>6.9</b>	<b>168.2</b>	<b>62.7</b>	<b>991.8</b>	<b>28.6</b>	<b>24</b>	<b>29.4</b>	<b>0.5</b>

\*c: Using Capabilities Class Dominant Condition Aggregation Method

Soils data provided by USDA and NRCS.