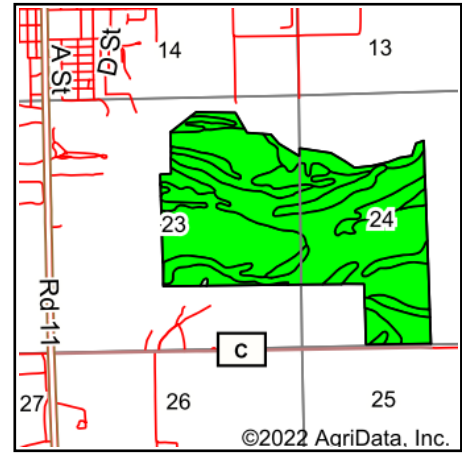
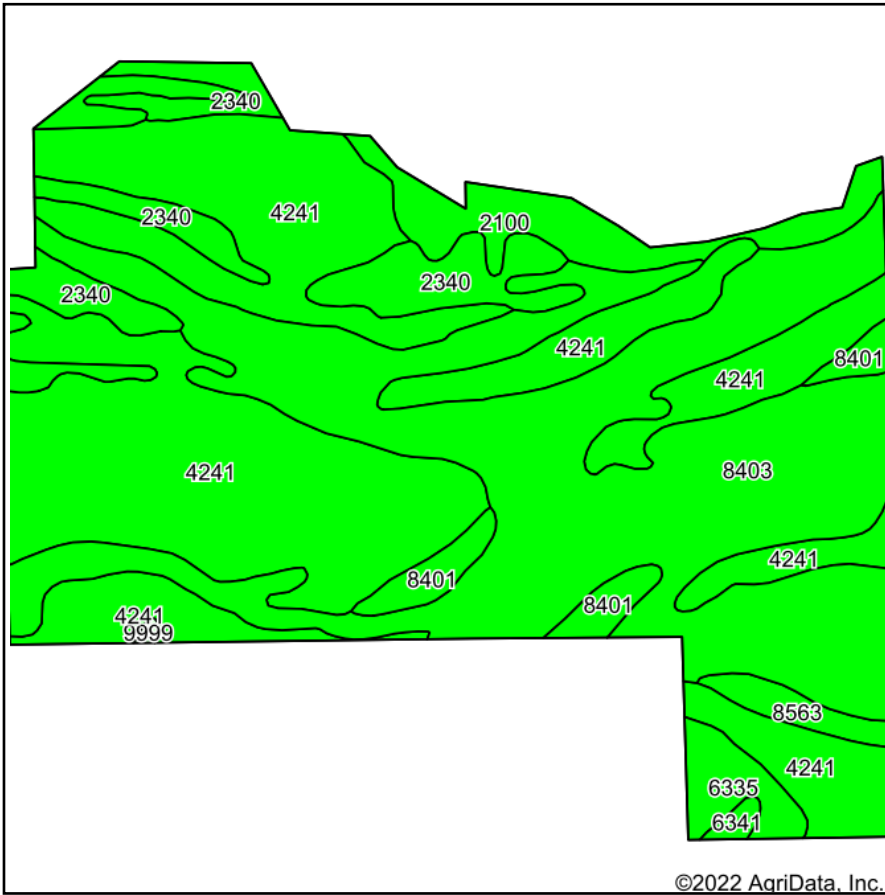


Colfax Soils Map



State: **Nebraska**
 County: **Colfax**
 Location: **23-17N-3E**
 Township: **Schuyler**
 Acres: **420.46**
 Date: **3/29/2022**



Soils data provided by USDA and NRCS.

Area Symbol: NE037, Soil Area Version: 20

Code	Soil Description	Acres	Percent of field	NCCPI Corn Legend	Non-Irr Class *c	Irr Class *c	SRPG	Corn Bu	Corn Irrigated Bu	Soybeans Bu	Soybeans Irrigated Bu	*n NCCPI Overall	*n NCCPI Corn	*n NCCPI Small Grains	*n NCCPI Soybeans	*n NCCPI Cotton
4241	Ord fine sandy loam, occasionally flooded	182.24	43.3%		IIw	IIw	21	65	143	25	40	37	36	29	37	
8403	Alda loam, occasionally flooded	158.25	37.6%		IIIw	IIIw	31	68	152	32	41	31	27	31	24	
2340	Inavale loamy fine sand, 2 to 9 percent slopes, rarely flooded	31.18	7.4%		VIe	IVe	33					30	30	24	27	9
2100	Boel fine sandy loam, 0 to 2 percent slopes, occasionally flooded	24.19	5.8%		IIIw	IIIw	29	53	109	25	33	40	40	26	33	
8401	Alda fine sandy loam, occasionally flooded	10.20	2.4%		IIIw	IIIw	31	62	149	28	38	29	26	29	23	
6335	Lawet silt loam, rarely flooded	7.66	1.8%		IVw	IVw	33	81	144			70	49	37	70	
8563	Platte loam, occasionally flooded	5.15	1.2%		IVw	IVw	34	57	102	23	30	31	31	31	23	
6341	Lawet silty clay loam, occasionally flooded	1.25	0.3%		IVw	IVw	34	75	132			75	52	35	75	



9999	Water	0.34	0.1%			0										
Weighted Average					2.82	2.67	26.8	60.7	133.3	25.3	36	*n 34.8	*n 32.3	*n 29.4	*n 31.3	*n 0.7

*n: The aggregation method is "Weighted Average using all components"

*c: Using Capabilities Class Dominant Condition Aggregation Method

Soils data provided by USDA and NRCS.