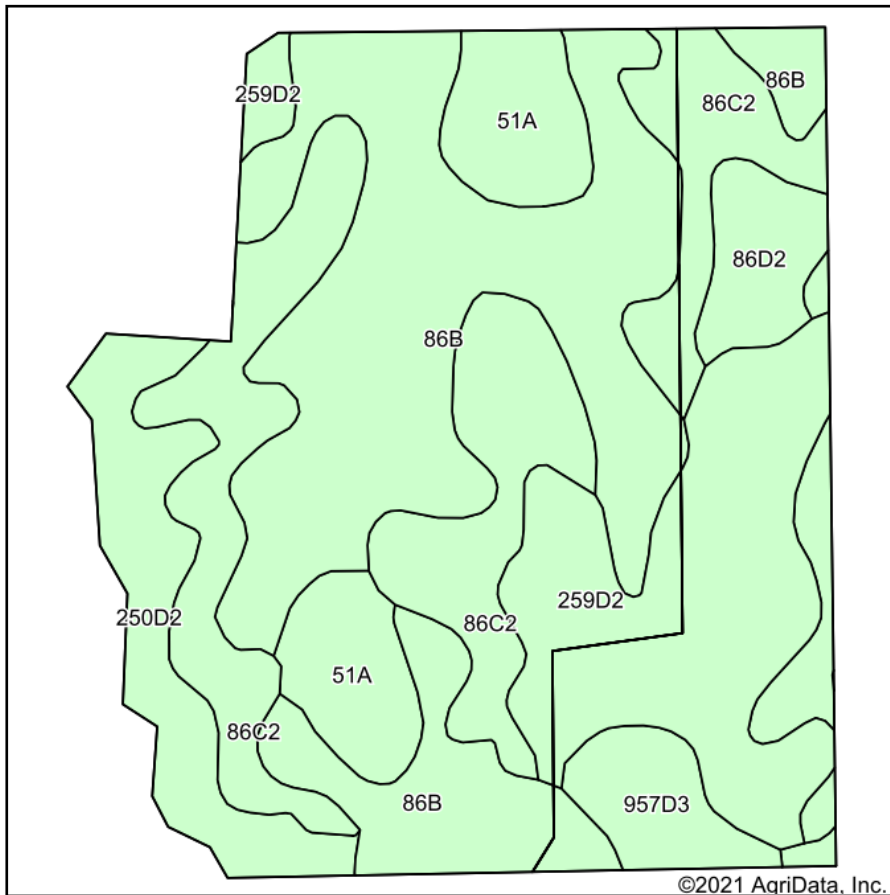
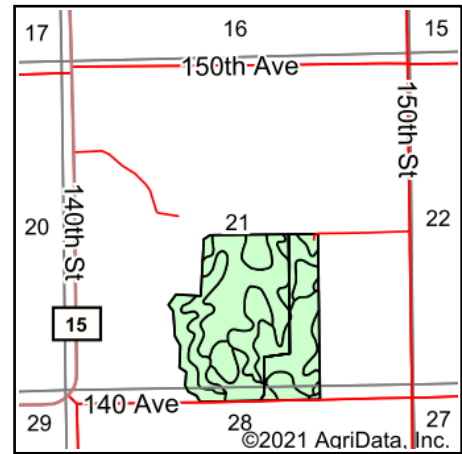


East Bulman Soils Map



Soils data provided by USDA and NRCS.



State: **Illinois**
 County: **Warren**
 Location: **21-10N-1W**
 Township: **Floyd**
 Acres: **125.5**
 Date: **7/28/2021**



Maps Provided By:



Area Symbol: IL187, Soil Area Version: 14

Code	Soil Description	Acres	Percent of field	Corn Bu/A	Soybeans Bu/A	Crop productivity index for optimum management
**86B	Oscosilt loam, 2 to 5 percent slopes	44.01	35.1%	**189	**59	**140
**86C2	Oscosilt loam, 5 to 10 percent slopes, eroded	30.31	24.2%	**178	**56	**131
**259D2	Assumption silt loam, 10 to 18 percent slopes, eroded	22.98	18.3%	**145	**46	**106
**250D2	Velma silt loam, 10 to 18 percent slopes, eroded	9.93	7.9%	**136	**45	**101
51A	Muscataune silt loam, 0 to 2 percent slopes	9.78	7.8%	200	64	147
**86D2	Oscosilt loam, 10 to 18 percent slopes, eroded	4.26	3.4%	**170	**53	**125
**957D3	Elco-Atlas silty clay loams, 10 to 18 percent slopes, severely eroded	4.23	3.4%	**95	**32	**71
Weighted Average				171.1	54.1	126.2

Table: Optimum Crop Productivity Ratings for Illinois Soil by K.R. Olson and J.M. Lang, Office of Research, ACES, University of Illinois at Champaign-Urbana. Version: 1/2/2012 Amended Table S2 B811

Crop yields and productivity indices for optimum management (B811) are maintained at the following NRES web site: <http://soilproductivity.nres.illinois.edu/>

** Indexes adjusted for slope and erosion according to Bulletin 811 Table S3

Soils data provided by USDA and NRCS. Soils data provided by University of Illinois at Champaign-Urbana.