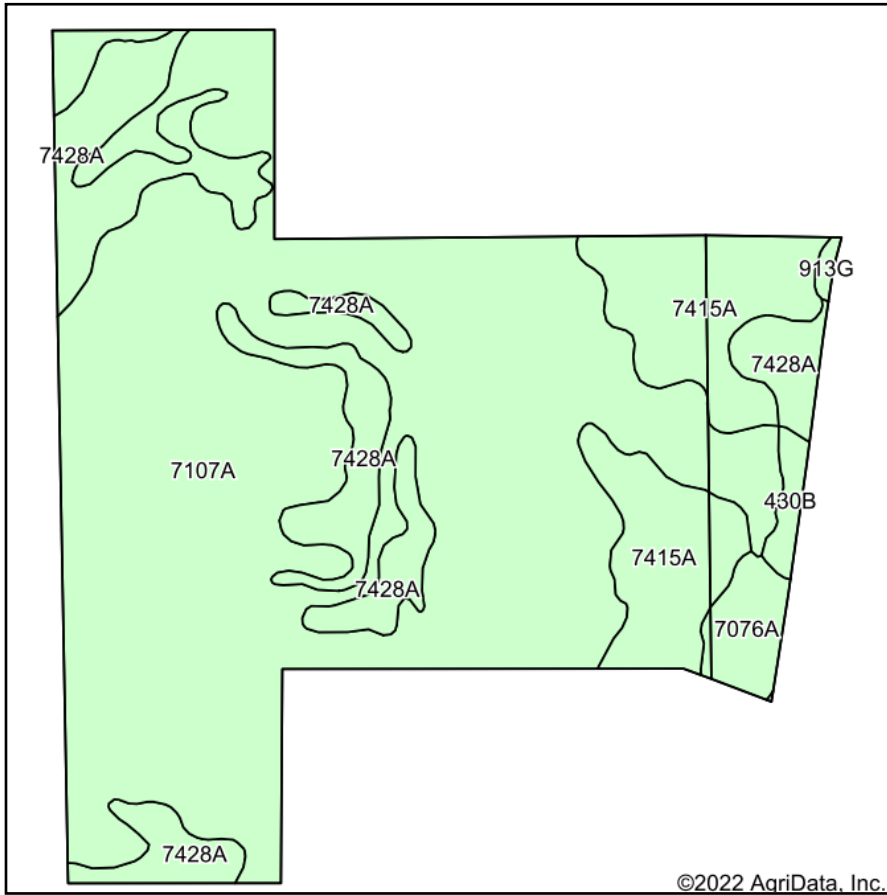
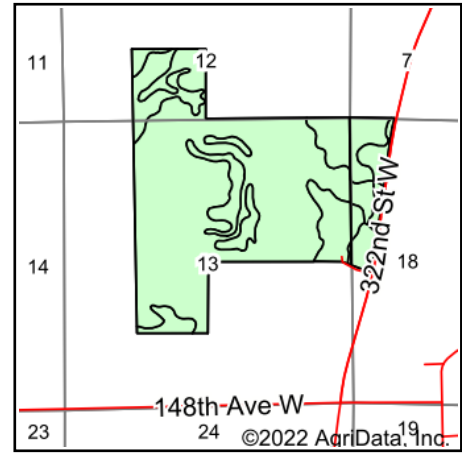


Gochee Soils Map



Soils data provided by USDA and NRCS.



State: **Illinois**
 County: **Rock Island**
 Location: **13-16N-6W**
 Township: **Drury**
 Acres: **369.76**
 Date: **3/29/2022**



Maps Provided By:



Area Symbol: IL161, Soil Area Version: 17

Code	Soil Description	Acres	Percent of field	Corn Bu/A	Soybeans Bu/A	Crop productivity index for optimum management
7107A	Sawmill silty clay loam, 0 to 2 percent slopes, rarely flooded	256.00	69.2%	189	60	139
7428A	Coffeen silt loam, 0 to 2 percent slopes, rarely flooded	55.84	15.1%	181	57	132
7415A	Orion silt loam, 0 to 2 percent slopes, rarely flooded	45.82	12.4%	180	57	131
7076A	Otter silt loam, 0 to 2 percent slopes, rarely flooded	8.01	2.2%	186	61	139
**430B	Raddle silt loam, 2 to 5 percent slopes	3.23	0.9%	**187	**58	**137
**913G	Marseilles-Hickory silt loams, 35 to 60 percent slopes	0.86	0.2%	**61	**20	**45
Weighted Average				186.3	59.1	136.7

Table: Optimum Crop Productivity Ratings for Illinois Soil by K.R. Olson and J.M. Lang, Office of Research, ACES, University of Illinois at Champaign-Urbana. Version: 1/2/2012 Amended Table S2 B811

Crop yields and productivity indices for optimum management (B811) are maintained at the following NRES web site: <http://soilproductivity.nres.illinois.edu/>

** Indexes adjusted for slope and erosion according to Bulletin 811 Table S3

Soils data provided by USDA and NRCS. Soils data provided by University of Illinois at Champaign-Urbana.