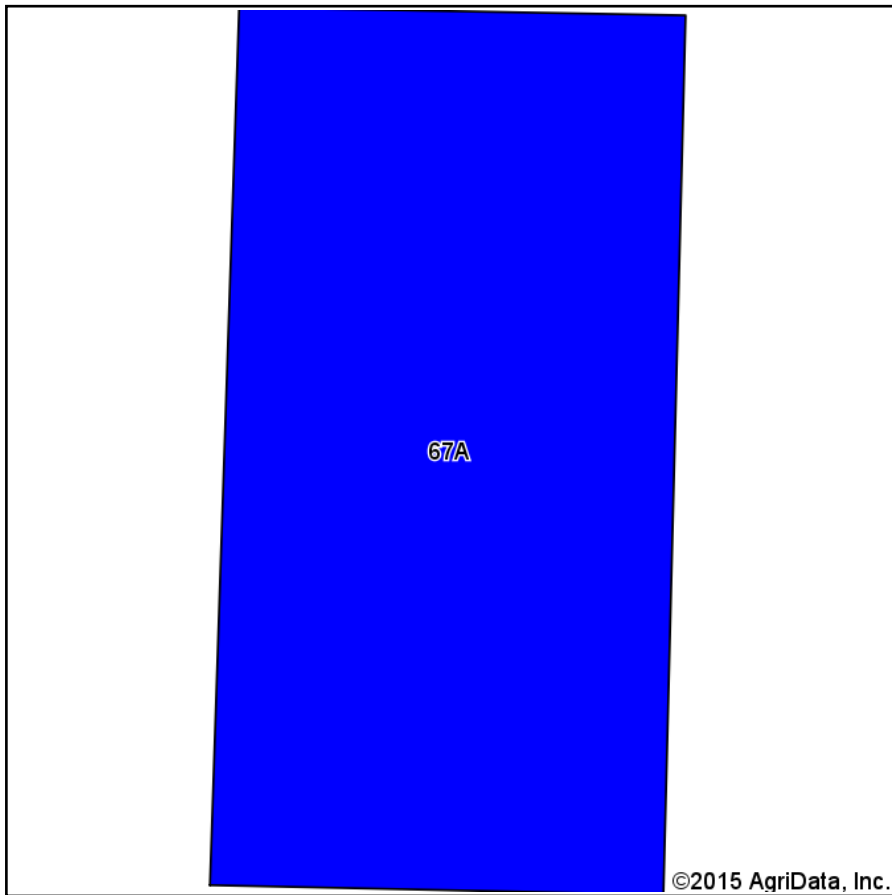
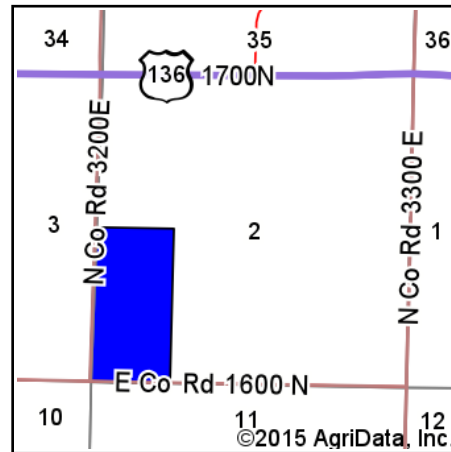


# Soil Map



Soils data provided by USDA and NRCS.

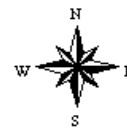
©2015 AgriData, Inc.



State: **Illinois**  
 County: **Mason**  
 Location: **2-21N-6W**  
 Township: **Pennsylvania**  
 Acres: **81.03**  
 Date: **4/21/2015**



Maps Provided By:



## Area Symbol: IL125, Soil Area Version: 8

Code	Soil Description	Acres	Percent of field	Il. State Productivity Index Legend	Subsoil rooting <sup>a</sup>	Corn Bu/A	Soybeans Bu/A	Wheat Bu/A	Oats Bu/A <sup>b</sup>	Sorghum <sup>c</sup> Bu/A	Alfalfa <sup>d</sup> hay, T/A	Grass-legume <sup>e</sup> hay, T/A	Crop productivity index for optimum management
67A	Harpster silty clay loam, 0 to 2 percent slopes	81.03	100.0%		FAV	182	57	68	89	0	0.00	5.39	133
<b>Weighted Average</b>						<b>182</b>	<b>57</b>	<b>68</b>	<b>89</b>	<b>*-</b>	<b>0.00</b>	<b>5.39</b>	<b>133</b>

Area Symbol: IL125, Soil Area Version: 8

**Table: Optimum Crop Productivity Ratings for Illinois Soil by K.R. Olson and J.M. Lang, Office of Research, ACES, University of Illinois at Champaign-Urbana.** Version: 1/2/2012 Amended Table S2 B811 (Updated 1/10/2012)

Crop yields and productivity indices for optimum management (B811) are maintained at the following NRES web site: <http://soilproductivity.nres.illinois.edu/>

\*\* Indexes adjusted for slope and erosion according to Bulletin 811 Table S3

**a** UNF = unfavorable; FAV = favorable

**b** Soils in the southern region were not rated for oats and are shown with a zero "0".

**c** Soils in the northern region or in both regions were not rated for grain sorghum and are shown with a zero "0".

**d** Soils in the poorly drained group were not rated for alfalfa and are shown with a zero "0".

**e** Soils in the well drained group were not rated for grass-legume and are shown with a zero "0".

Soils data provided by USDA and NRCS. Soils data provided by University of Illinois at Champaign-Urbana.