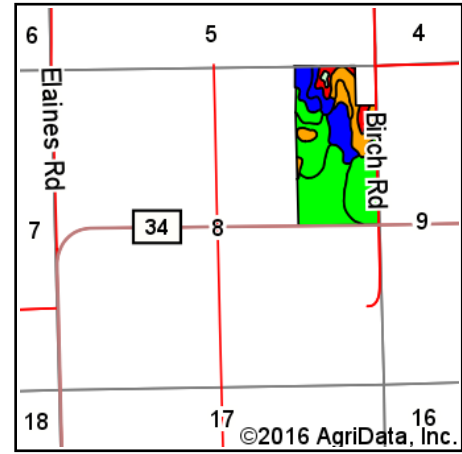
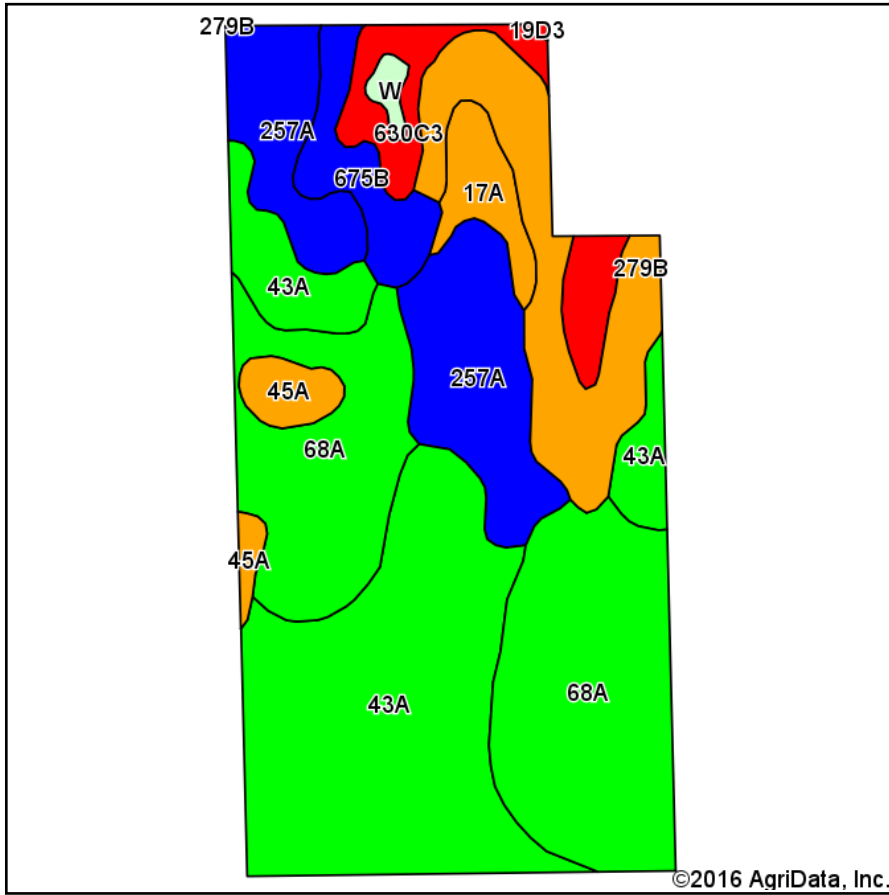


East Chenoweth Soils Map



State: **Illinois**
 County: **Fulton**
 Location: **8-5N-1E**
 Township: **Farmers**
 Acres: **76.79**
 Date: **5/12/2016**



Soils data provided by USDA and NRCS.

©2016 AgriData, Inc.

© AgriData, Inc. 2016

www.AgriDataInc.com

Area Symbol: IL057, Soil Area Version: 10

Code	Soil Description	Acres	Percent of field	Il. State Productivity Index Legend	Subsoil rooting	Corn Bu/A	Soybeans Bu/A	Wheat Bu/A	Oats Bu/A	Sorghum Bu/A	Alfalfa hay, T/A	Grass-legume hay, T/A	Crop productivity index for optimum management
43A	Ipava silt loam, 0 to 2 percent slopes	23.73	30.9%		FAV	191	62	77	100	0	0.00	5.90	142
68A	Sable silty clay loam, 0 to 2 percent slopes	21.90	28.5%		FAV	192	63	74	99	0	0.00	5.77	143
257A	Clarksdale silt loam, 0 to 2 percent slopes	11.13	14.5%		FAV	174	56	69	89	0	0.00	5.27	128
**279B	Rozetta silt loam, 2 to 5 percent slopes	8.46	11.0%		FAV	**162	**50	**64	**83	0	**5.22	0.00	**119
**630C3	Navlys silty clay loam, 5 to 10 percent slopes, severely eroded	4.03	5.2%		FAV	**120	**39	**47	**54	0	0.00	**3.99	**89
**675B	Greenbush silt loam, 2 to 5 percent slopes	3.13	4.1%		FAV	**182	**57	**69	**96	0	0.00	**5.34	**133
17A	Keomah silt loam, 0 to 2 percent slopes	2.16	2.8%		FAV	161	51	65	83	0	0.00	5.14	119
45A	Denny silt loam, 0 to 2 percent slopes	1.73	2.3%		FAV	159	52	64	77	0	0.00	4.89	118
W	Water	0.46	0.6%										
**19D3	Sylvan silty clay loam, 10 to 18 percent slopes, severely eroded	0.06	0.1%		FAV	**122	**40	**49	**57	0	**3.25	0.00	**90
Weighted Average						178.8	57.8	70.5	92	*-	0.58	4.91	132.5

Area Symbol: IL057, Soil Area Version: 10

Table: Optimum Crop Productivity Ratings for Illinois Soil by K.R. Olson and J.M. Lang, Office of Research, ACES, University of Illinois at Champaign-Urbana. Version: 1/2/2012 Amended Table S2 B811

Crop yields and productivity indices for optimum management (B811) are maintained at the following NRES web site:

<https://www.ideals.illinois.edu/handle/2142/1027/>

** Indexes adjusted for slope and erosion according to Bulletin 811 Table S3

a UNF = unfavorable; FAV = favorable

b Soils in the southern region were not rated for oats and are shown with a zero "0".

c Soils in the northern region or in both regions were not rated for grain sorghum and are shown with a zero "0".

d Soils in the poorly drained group were not rated for alfalfa and are shown with a zero "0".

e Soils in the well drained group were not rated for grass-legume and are shown with a zero "0".

Soils data provided by USDA and NRCS. Soils data provided by University of Illinois at Champaign-Urbana.

*c: Using Capabilities Class Dominant Condition Aggregation Method