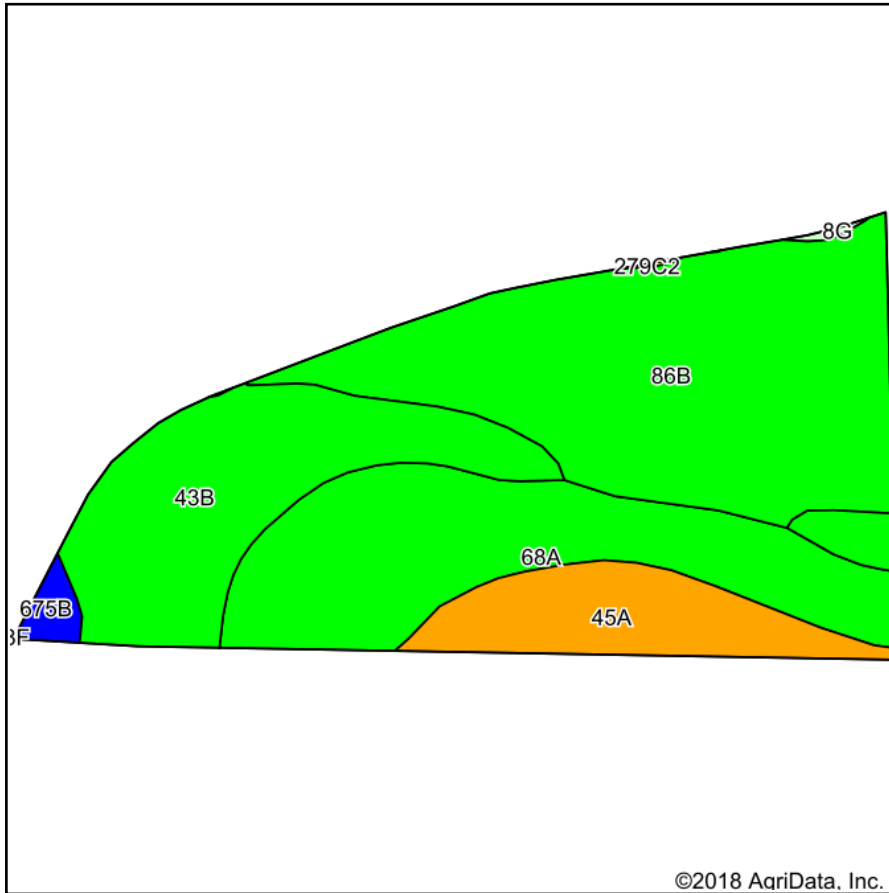
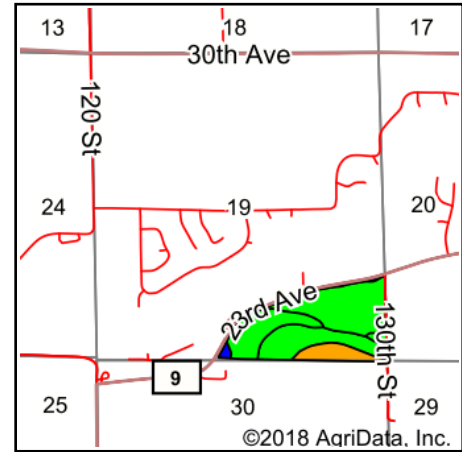


Pendarvis East Soils Map



Soils data provided by USDA and NRCS.

©2018 AgriData, Inc.



©2018 AgriData, Inc.

State: **Illinois**
 County: **Warren**
 Location: **19-8N-1W**
 Township: **Greenbush**
 Acres: **70.26**
 Date: **8/16/2018**



Maps Provided By:



Area Symbol: IL187, Soil Area Version: 11

Code	Soil Description	Acres	Percent of field	Il. State Productivity Index Legend	Subsoil rooting ^a	Corn Bu/A	Soybeans Bu/A	Wheat Bu/A	Oats Bu/A ^b	Sorghum c Bu/A	Alfalfa ^d hay, T/A	Grass-legume ^e hay, T/A	Crop productivity index for optimum management
**86B	Osco silt loam, 2 to 5 percent slopes	27.76	39.5%		FAV	**189	**59	**74	**101	0	**6.83	0.00	**140
68A	Sable silty clay loam, 0 to 2 percent slopes	17.81	25.3%		FAV	192	63	74	99	0	0.00	5.77	143
**43B	Ipava silt loam, 2 to 5 percent slopes	16.13	23.0%		FAV	**189	**61	**76	**99	0	0.00	**5.84	**141
45A	Denny silt loam, 0 to 2 percent slopes	7.58	10.8%		FAV	159	52	64	77	0	0.00	4.89	118
**675B	Greenbush silt loam, 2 to 5 percent slopes	0.86	1.2%		FAV	**182	**57	**69	**96	0	0.00	**5.34	**133
**8G	Hickory silt loam, 35 to 60 percent slopes	0.12	0.2%		FAV	**58	**20	**24	**27	0	**1.93	0.00	**44
Weighted Average						186.2	59.6	73.2	97.3	*-	2.70	3.40	138.4

Table: Optimum Crop Productivity Ratings for Illinois Soil by K.R. Olson and J.M. Lang, Office of Research, ACES, University of Illinois at Champaign-Urbana. Version: 1/2/2012 Amended Table S2 B811

Crop yields and productivity indices for optimum management (B811) are maintained at the following NRES web site: <http://soilproductivity.nres.illinois.edu/>

** Indexes adjusted for slope and erosion according to Bulletin 811 Table S3

^a UNF = unfavorable; FAV = favorable

^b Soils in the southern region were not rated for oats and are shown with a zero "0".

^c Soils in the northern region or in both regions were not rated for grain sorghum and are shown with a zero "0".

^d Soils in the poorly drained group were not rated for alfalfa and are shown with a zero "0".

^e Soils in the well drained group were not rated for grass-legume and are shown with a zero "0".

Soils data provided by USDA and NRCS. Soils data provided by University of Illinois at Champaign-Urbana.

*c: Using Capabilities Class Dominant Condition Aggregation Method