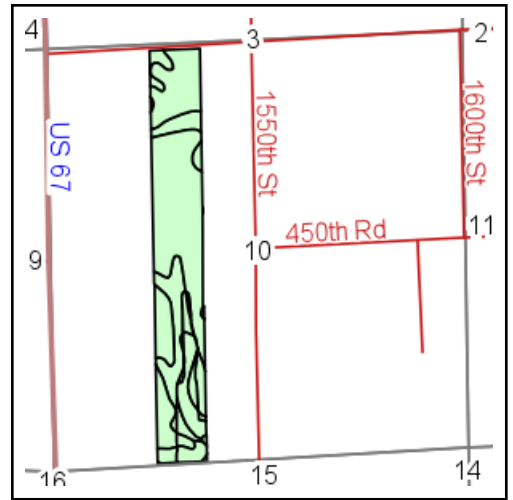
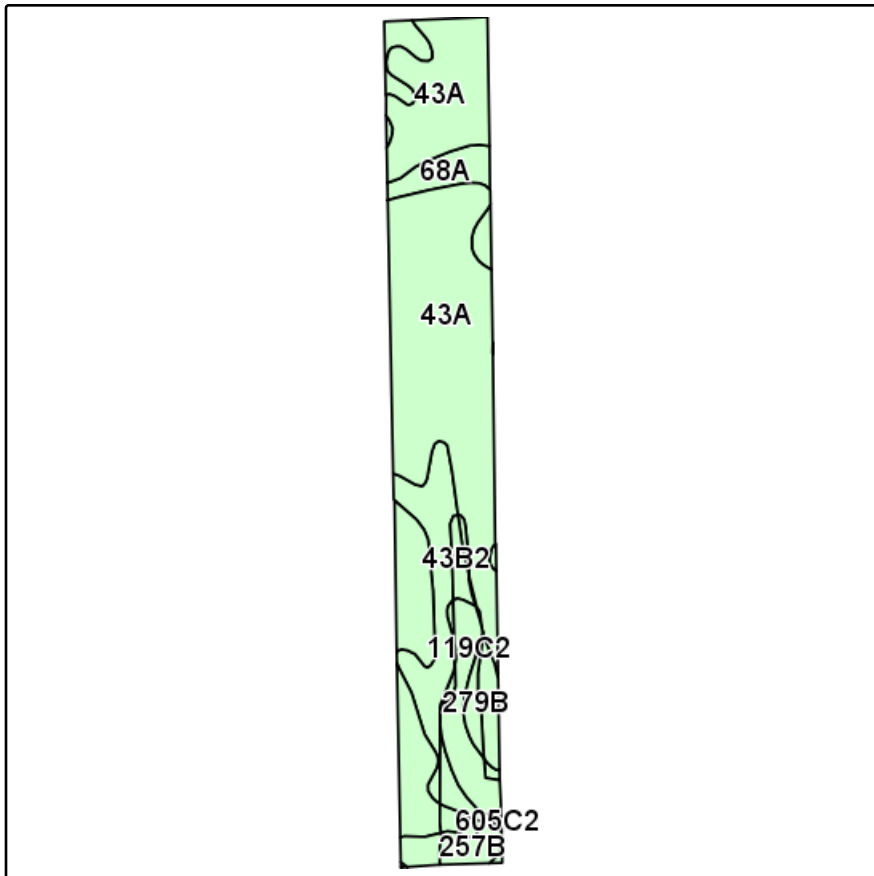


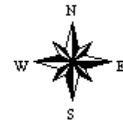
Soils Map



State: **Illinois**
 County: **McDonough**
 Location: **10-4N-2W**
 Township: **Industry**
 Acres: **79**
 Date: **11/10/2012**



Maps provided by:



©AgriData, Inc 2012
www.AgriDataInc.com

Field borders provided by Farm Service Agency as of 5/21/2008.
Soils data provided by University of Illinois at Champaign-Urbana.

Code	Soil Description	Acres	Percent of field	Il. State Productivity Index Legend	Corn Bu/A	Soybeans Bu/A	Crop productivity index for optimum management
43A	Ipava silt loam, 0 to 2 percent slopes	51.2	64.9%		191	62	142
**43B2	Ipava silt loam, 2 to 5 percent slopes, eroded	10.7	13.5%		**181	**59	**135
68A	Sable silty clay loam, 0 to 2 percent slopes	5.5	7.0%		192	63	143
**119C2	Elco silt loam, 5 to 10 percent slopes, eroded	5.5	6.9%		**140	**46	**104
**279B	Rozetta silt loam, 2 to 5 percent slopes	3	3.8%		**162	**50	**119
**257B	Clarksdale silt loam, 2 to 5 percent slopes	2.9	3.7%		**172	**55	**127
**605C2	Ursa silt loam, 5 to 10 percent slopes, eroded	0.2	0.3%		**102	**35	**77
Weighted Average					184.3	59.8	137

Table: Optimum Crop Productivity Ratings for Illinois Soil by K.R. Olson and J.M. Lang, Office of Research, ACES, University of Illinois at Champaign-Urbana. Version: 1/2/2012 Amended Table S2 B811 (Updated 1/10/2012)
 Crop yields and productivity indices for optimum management (B811) are maintained at the following NRES web site: <http://soilproductivity.nres.illinois.edu/>
 ** Indexes adjusted for slope and erosion according to Bulletin 811 Table S3