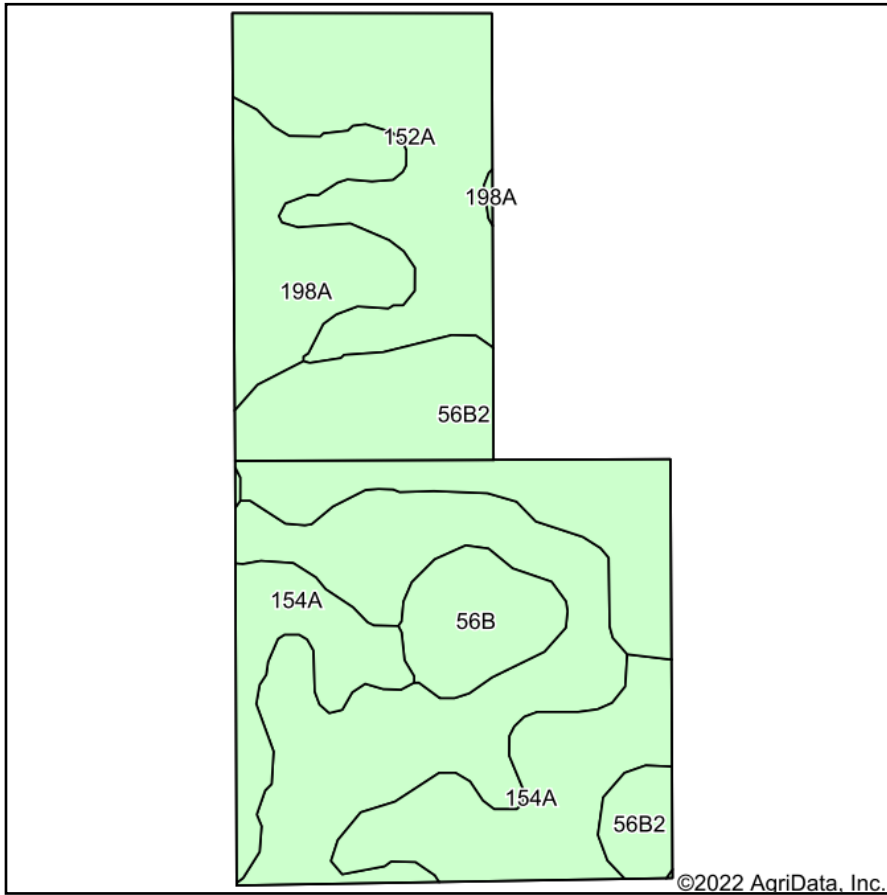
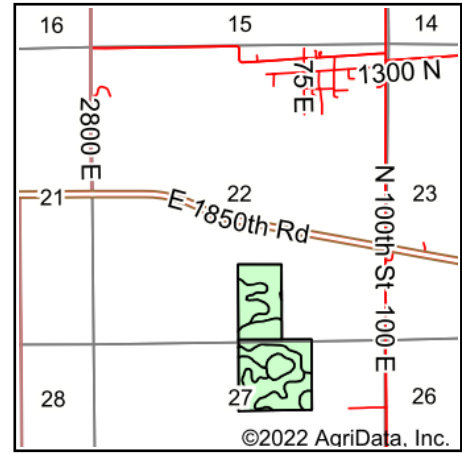


# Isabel Soils Map



Soils data provided by USDA and NRCS.



State: **Illinois**  
 County: **Edgar**  
 Location: **22-14N-14W**  
 Township: **Embarrass**  
 Acres: **64.96**  
 Date: **3/29/2022**



Maps Provided By:



© AgriData, Inc. 2021

www.AgriDataInc.com



Area Symbol: IL045, Soil Area Version: 16

| Code                    | Soil Description                               | Acres | Percent of field | Corn Bu/A    | Soybeans Bu/A | Crop productivity index for optimum management |
|-------------------------|--|-------|------------------|--------------|---------------|--|
| 152A                    | Drummer silty clay loam, 0 to 2 percent slopes | 28.26 | 43.5%            | 195          | 63            | 144  |
| **56B2                  | Dana silt loam, 2 to 5 percent slopes, eroded  | 13.80 | 21.2%            | **171        | **53          | **124  |
| 154A                    | Flanagan silt loam, 0 to 2 percent slopes      | 12.05 | 18.5%            | 194          | 63            | 144  |
| 198A                    | Elburn silt loam, 0 to 2 percent slopes        | 7.03  | 10.8%            | 197          | 61            | 143  |
| **56B                   | Dana silt loam, 2 to 5 percent slopes          | 3.82  | 5.9%             | **178        | **55          | **130  |
| <b>Weighted Average</b> |  |       |                  | <b>188.9</b> | <b>60.2</b>   | <b>138.8</b>                                   |

**Table: Optimum Crop Productivity Ratings for Illinois Soil by K.R. Olson and J.M. Lang, Office of Research, ACES, University of Illinois at Champaign-Urbana.** Version: 1/2/2012 Amended Table S2 B811

Crop yields and productivity indices for optimum management (B811) are maintained at the following NRES web site: <http://soilproductivity.nres.illinois.edu/>

\*\* Indexes adjusted for slope and erosion according to Bulletin 811 Table S3

Soils data provided by USDA and NRCS. Soils data provided by University of Illinois at Champaign-Urbana.