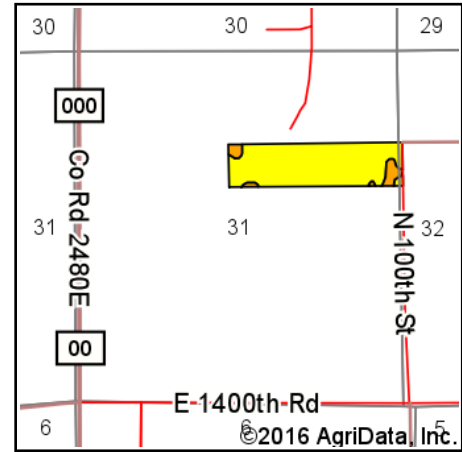
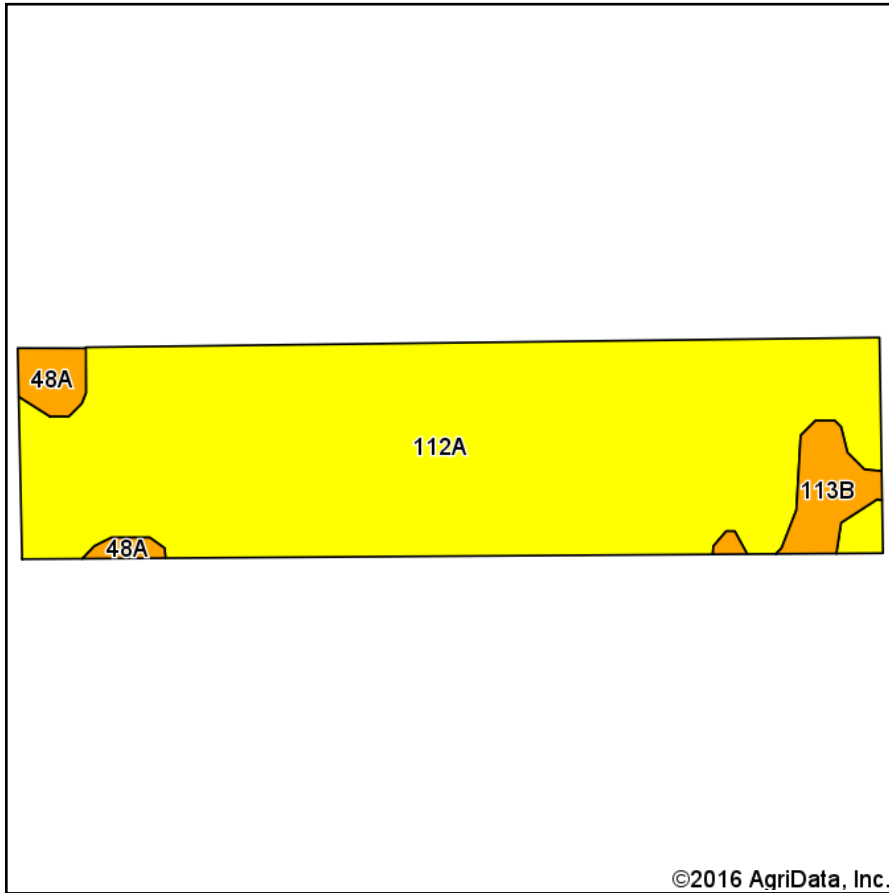


Lamb Soils Map



State: **Illinois**
 County: **Clark**
 Location: **31-11N-14W**
 Township: **Parker**
 Acres: **40.15**
 Date: **10/25/2016**



Soils data provided by USDA and NRCS.

©2016 AgriData, Inc.

Area Symbol: IL023, Soil Area Version: 10

| Code | Soil Description | Acres | Percent of field | Il. State Productivity Index Legend | Subsoil rooting | Corn Bu/A | Soybeans Bu/A | Wheat Bu/A | Oats Bu/A | Sorghum Bu/A | Alfalfa hay, T/A | Grass-legume hay, T/A | Crop productivity index for optimum management |
|-------------------------|---|-------|------------------|-------------------------------------|-----------------|--------------|---------------|------------|-----------|--------------|------------------|-----------------------|--|
| 112A | Cowden silt loam, 0 to 2 percent slopes | 37.10 | 92.4% | | FAV | 159 | 49 | 63 | 0 | 119 | 0.00 | 4.89 | 117 |
| **113B | Oconee silt loam, 2 to 5 percent slopes | 1.84 | 4.6% | | FAV | **162 | **50 | **62 | 0 | **118 | 0.00 | **5.22 | **118 |
| 48A | Ebbert silt loam, 0 to 2 percent slopes | 1.21 | 3.0% | | FAV | 173 | 55 | 66 | 0 | 124 | 0.00 | 5.14 | 125 |
| Weighted Average | | | | | | 159.6 | 49.2 | 63 | * | 119.1 | 0.00 | 4.91 | 117.3 |

Area Symbol: IL023, Soil Area Version: 10

Table: Optimum Crop Productivity Ratings for Illinois Soil by K.R. Olson and J.M. Lang, Office of Research, ACES, University of Illinois at Champaign-Urbana. Version: 1/2/2012 Amended Table S2 B811

Crop yields and productivity indices for optimum management (B811) are maintained at the following NRES web site:

<https://www.ideals.illinois.edu/handle/2142/1027/>

** Indexes adjusted for slope and erosion according to Bulletin 811 Table S3

a UNF = unfavorable; FAV = favorable

b Soils in the southern region were not rated for oats and are shown with a zero "0".

c Soils in the northern region or in both regions were not rated for grain sorghum and are shown with a zero "0".

d Soils in the poorly drained group were not rated for alfalfa and are shown with a zero "0".

e Soils in the well drained group were not rated for grass-legume and are shown with a zero "0".

Soils data provided by USDA and NRCS. Soils data provided by University of Illinois at Champaign-Urbana.

*c: Using Capabilities Class Dominant Condition Aggregation Method