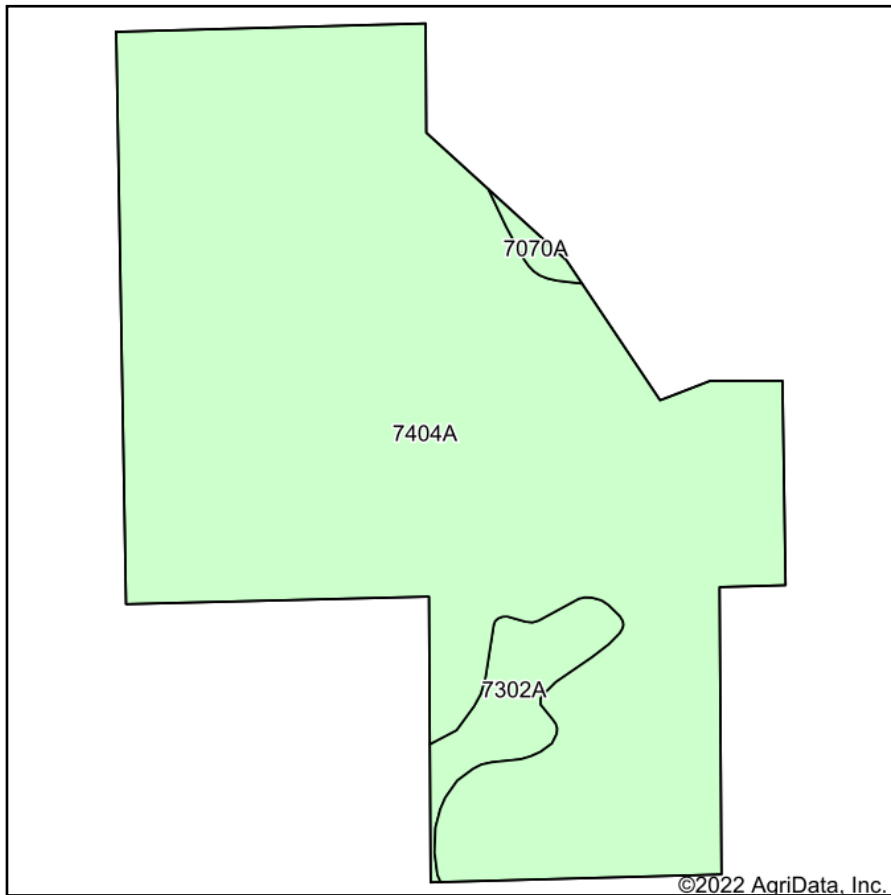
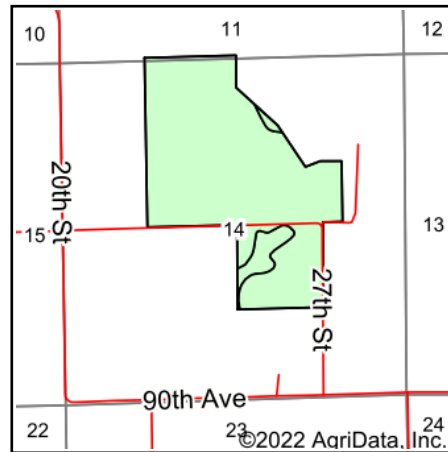


Nopoulos Soils Map



Soils data provided by USDA and NRCS.



State: **Illinois**
 County: **Mercer**
 Location: **14-14N-6W**
 Township: **New Boston**
 Acres: **175.4**
 Date: **1/11/2022**



Maps Provided By:



Area Symbol: IL131, Soil Area Version: 17

Code	Soil Description	Acres	Percent of field	Corn Bu/A	Soybeans Bu/A	Crop productivity index for optimum management
7404A	Titus silty clay loam, 0 to 2 percent slopes, rarely flooded	166.26	94.8%	158	52	118
7302A	Ambraw clay loam, 0 to 2 percent slopes, rarely flooded	8.01	4.6%	154	50	114
7070A	Beaucoup silty clay loam, 0 to 2 percent slopes, rarely flooded	1.13	0.6%	176	58	132
Weighted Average				157.9	51.9	117.9

Table: Optimum Crop Productivity Ratings for Illinois Soil by K.R. Olson and J.M. Lang, Office of Research, ACES, University of Illinois at Champaign-Urbana. Version: 1/2/2012 Amended Table S2 B811

Crop yields and productivity indices for optimum management (B811) are maintained at the following NRES web site: <http://soilproductivity.nres.illinois.edu/>

** Indexes adjusted for slope and erosion according to Bulletin 811 Table S3

Soils data provided by USDA and NRCS. Soils data provided by University of Illinois at Champaign-Urbana.