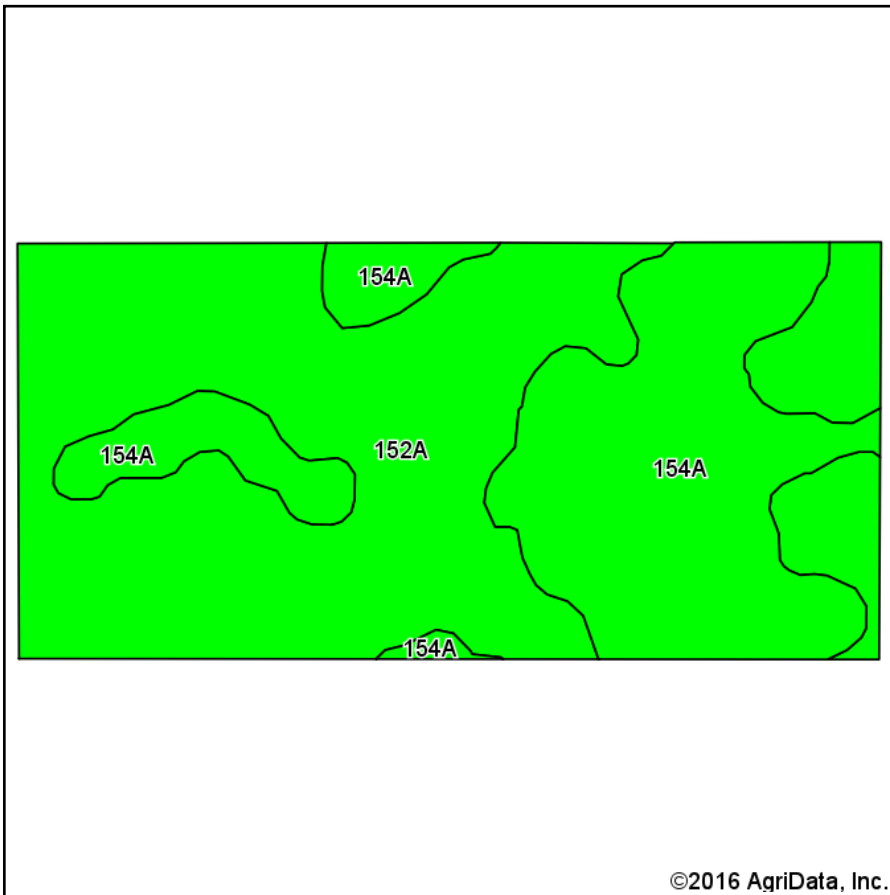
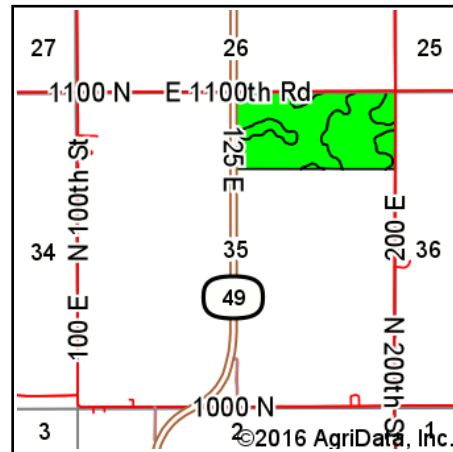


Rowe (Glick) Soils Map



Soils data provided by USDA and NRCS.



State: **Illinois**
 County: **Edgar**
 Location: **35-14N-14W**
 Township: **Embarrass**
 Acres: **81.93**
 Date: **10/27/2016**



Area Symbol: IL045, Soil Area Version: 10

Code	Soil Description	Acres	Percent of field	Il. State Productivity Index Legend	Subsoil rooting ^a	Corn Bu/A	Soybeans Bu/A	Wheat Bu/A	Oats Bu/A ^b	Sorghum ^c Bu/A	Alfalfa ^d hay, T/A	Grass-le gume ^e hay, T/A	Crop productivity index for optimum management
152A	Drummer silty clay loam, 0 to 2 percent slopes	51.26	62.6%		FAV	195	63	73	100	0	0.00	5.64	144
154A	Flanagan silt loam, 0 to 2 percent slopes	30.67	37.4%		FAV	194	63	77	102	0	0.00	5.90	144
Weighted Average						194.6	63	74.5	100.7	*-	0.00	5.74	144

Area Symbol: IL045, Soil Area Version: 10

Table: Optimum Crop Productivity Ratings for Illinois Soil by K.R. Olson and J.M. Lang, Office of Research, ACES, University of Illinois at Champaign-Urbana. Version: 1/2/2012 Amended Table S2 B811

Crop yields and productivity indices for optimum management (B811) are maintained at the following NRES web site:

<https://www.ideals.illinois.edu/handle/2142/1027/>

** Indexes adjusted for slope and erosion according to Bulletin 811 Table S3

^a UNF = unfavorable; FAV = favorable

^b Soils in the southern region were not rated for oats and are shown with a zero "0".

^c Soils in the northern region or in both regions were not rated for grain sorghum and are shown with a zero "0".

^d Soils in the poorly drained group were not rated for alfalfa and are shown with a zero "0".

^e Soils in the well drained group were not rated for grass-legume and are shown with a zero "0".

Soils data provided by USDA and NRCS. Soils data provided by University of Illinois at Champaign-Urbana.

*c: Using Capabilities Class Dominant Condition Aggregation Method