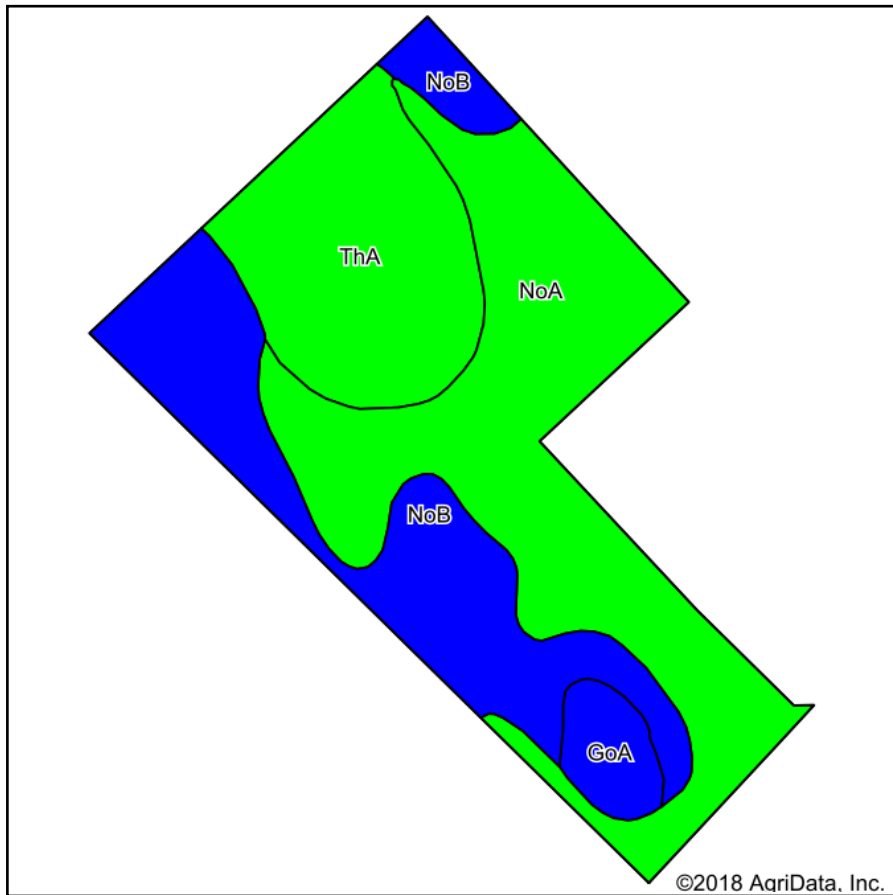
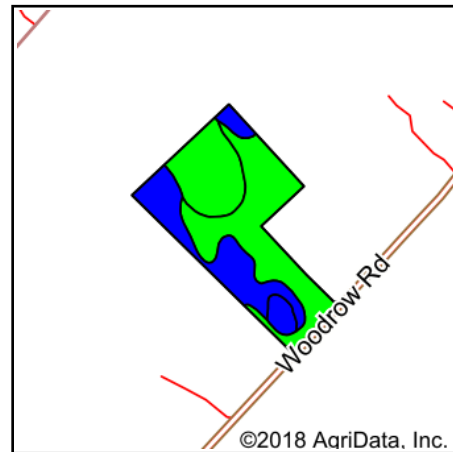


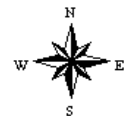
# Woodrow Soils Map



Soils data provided by USDA and NRCS.



State: **South Carolina**  
 County: **Lee**  
 Location: **34° 7' 12.86, -80° 21' 35.83**  
 Township: **Ashwood**  
 Acres: **92.49**  
 Date: **2/27/2018**



## Area Symbol: SC061, Soil Area Version: 19

| Code                    | Soil Description                            | Acres | Percent of field | Non-Irr Class Legend | Non-Irr Class *c | Bahiagrass | Corn       | Cotton lint  | Improved bermudagrass | Pasture    | Peanuts  | Soybeans    | Tobacco     | Wheat         |             |
|-------------------------|---|-------|------------------|----------------------|------------------|------------|------------|--------------|-----------------------|------------|----------|-------------|-------------|---------------|-------------|
| NoA                     | Norfolk loamy sand, 0 to 2 percent slopes   | 42.08 | 45.5%            |                      | lw               |            | 110        | 700          |                       | 10.5       | 4000     | 40          | 3000        | 60            |             |
| NoB                     | Norfolk loamy sand, 2 to 6 percent slopes   | 25.54 | 27.6%            |                      | lle              |            | 100        | 650          |                       | 10         | 3700     | 35          | 2900        | 55            |             |
| ThA                     | Thursa loamy sand, 0 to 2 percent slopes    | 21.13 | 22.8%            |                      | ls               | 8.5        | 120        | 900          | 10.5                  |            | 4000     | 45          | 2400        |               |             |
| GoA                     | Goldsboro sandy loam, 0 to 2 percent slopes | 3.74  | 4.0%             |                      | llw              |            | 125        | 700          |                       | 11.5       | 3600     | 42          | 3000        | 60            |             |
| <b>Weighted Average</b> |   |       |                  |                      |                  |            | <b>1.9</b> | <b>110.1</b> | <b>731.9</b>          | <b>2.4</b> | <b>8</b> | <b>3901</b> | <b>39.8</b> | <b>2835.3</b> | <b>44.9</b> |

\*c: Using Capabilities Class Dominant Condition Aggregation Method

Soils data provided by USDA and NRCS.